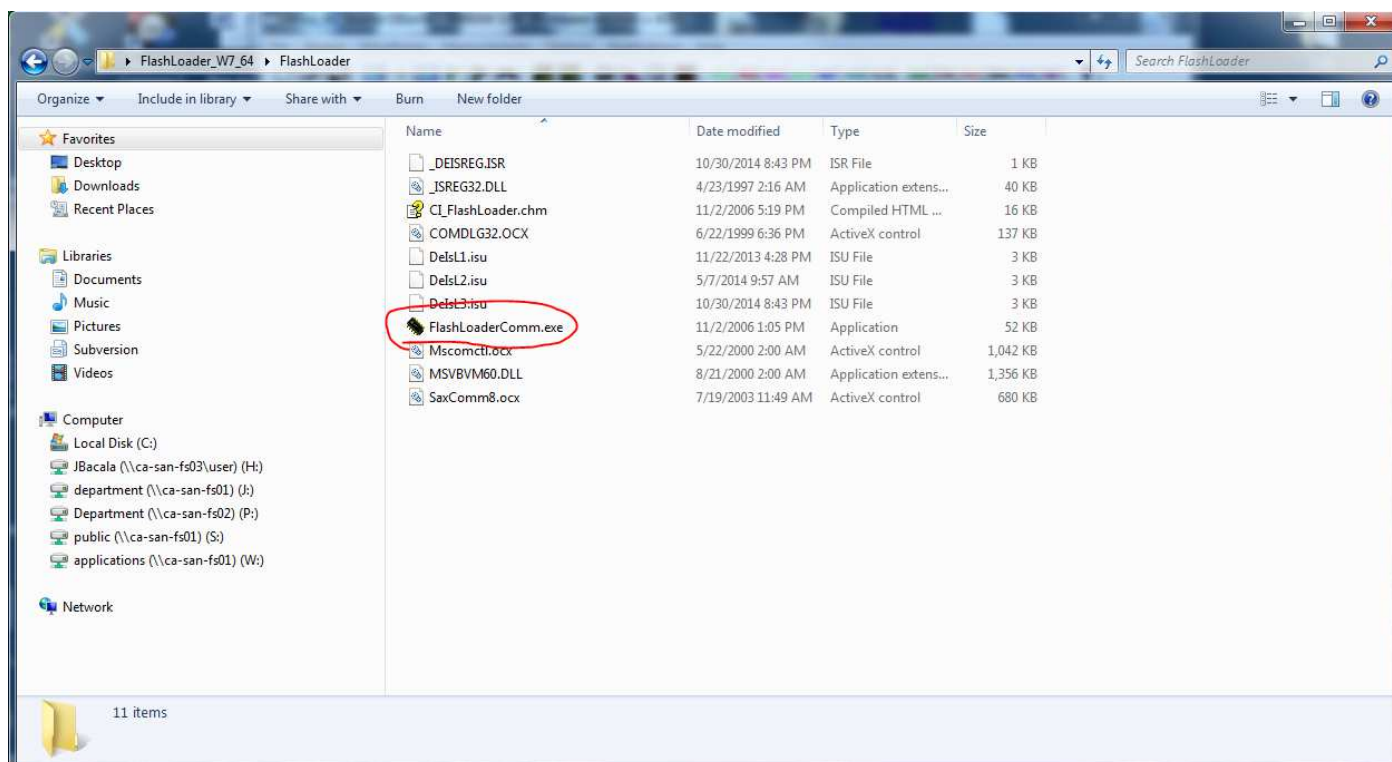


# Installation Guide for Flash Loader V1.6.0 64-bit

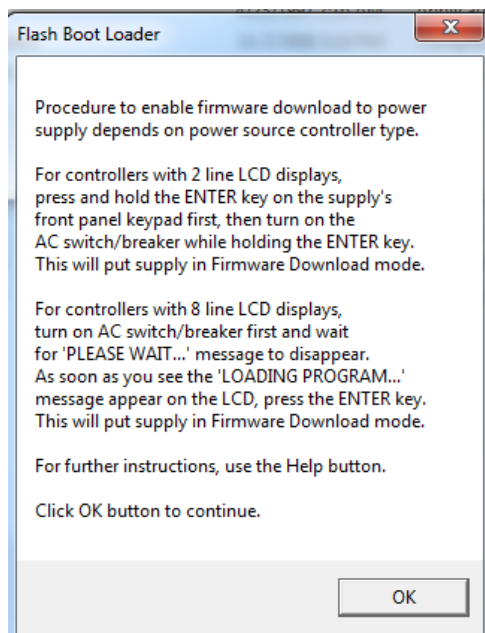
## Installation Instructions

1. Download and extract "FlashLoader\_W7\_64.zip" to your Desktop.
2. Inside the "FlashLoader" folder double click and open icon "FlashLoaderComm.exe"

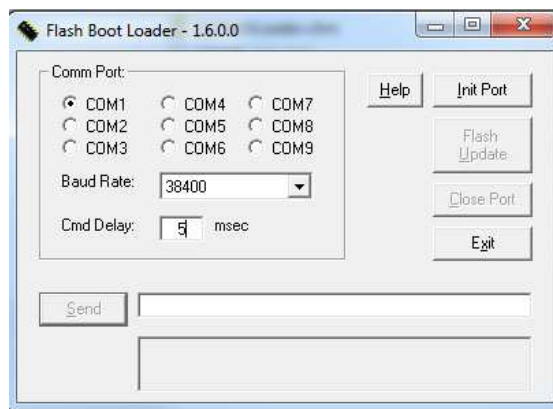
**Note: If an error "Component 'SaxComm8.ocx' or one of its dependencies not correctly registered: a file is missing or invalid" appears. Please install the Graphical User Interface(GUI) located on our website for your supply first .**



3. Follow the onscreen instructions. Click OK.



4. The following Flash Boot Loader window will appear below:



5. Select the proper Comm Port configured on your system. Baud Rate set to 38400 and Cmd Delay set to 5 msec. Click "Init Port". If connection is successful "Flash Update" will become clickable. Click "Flash Update" then click Browse and select firmware "\*.hex" file. Click "Download" firmware download process will begin.

California Instruments Product Support:

On-Line Request:

[www.programmablepower.com/support/support\\_CallInst.htm](http://www.programmablepower.com/support/support_CallInst.htm)

Direct: [ci.ppd@ametek.com](mailto:ci.ppd@ametek.com)

Phone: 800-733-5427